



Jamal Al Serkal Group

Dubai Investment Park – PO Box 445160
Tel: +971 4 886 8208 - Fax: +971 4 886 8207



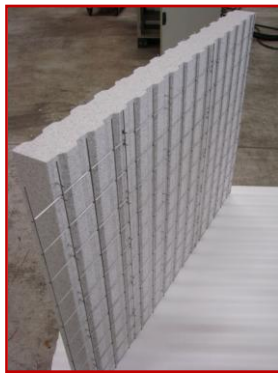
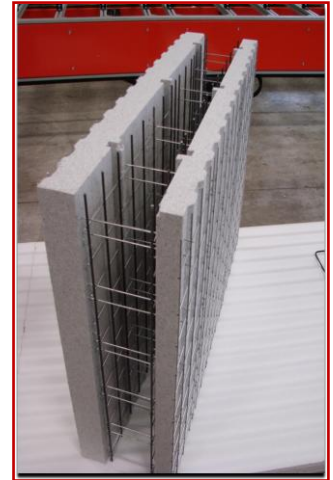
AL NAIMI UNIVERSAL TRADING, INC

CONCREWALL CONSTRUCTION SYSTEMS

SCHNELL HOUSE (German & Italian Engineered)

Jamal Al Serkal Group has the Exclusive Agency Distribution Rights for the UAE, Middle East and Africa for this specially designed and engineered system from EUROPE.

This specially engineered “Industrial Structure Building System” lets you erect a Building or Residential Property with days, using this “Patented” technique of Reinforced Concrete Casted on Site System. Please visit the Web-Site: www.schnell.it or www.schnellhouse.it.



“CONCREWALL”, is an industrial system for the construction of structural walls of reinforced concrete for buildings in single panel up to four stories, G+3, and theoretically unlimited stories in double panel -eventual limitation derived solely after verification in accordance with the Building Codes.

The system is composed of a factory produced panel of undulated (wave shape) polystyrene covered both sides by a electro welded zinc coated square mesh, which in turn are connected by 40 connectors per m2 realizing a 3 dimensional hyper static reinforcement steel.

The panels are assembled on site and in situ poured concrete (double panel, floors, stairs) and shot created concrete (single panel) to realize the different elements of the system:

- Vertical structural walls
- Horizontal structural elements
- Cladding element
- Internal walls

